



St Andrew's C.E. Primary School Over Hulton



Autumn Term 2

26th September 2024

Growing in Faith, Hope and Love 1 Corinthians 13:13

Editors
Evie and Maya

Rec	22/1/25	30/4/25
Yr1	15/1/25	2/5/25
Yr2	29/1/25	21/5/25
Yr3	27/11/24	26/3/25
Yr4	29/11/24	20/3/25
Yr5	13/11/24	12/3/25
Yr6	6/11/24	Leaver's Service w.b. 14/7/25



We have endeavoured to ensure that these dates are correct - they could be subject to change due to unforeseen circumstances.

Parent Governor

The position of Parent Governor is due for re-election. If you would like to be considered, or know someone who would, please contact school so that we can clarify the expectations of the position in readiness for the appointment process. We hope that we will begin this on our return to school after half term

Clubs	Before School 8:00am— 8:45am	After School 3:30pm—4:20/30pm
Monday	KS2 Football	Dance Athletics & Running
Tuesday	Apparatus	Shining Stars; Outdoor & Adventurous
Wednesday	Girls Football	Y2, Y3, Y4 Football; Outdoor & Adventurous; Ju Jitsu
Thursday	Dodgeball	
Friday	Throwing Skills	

PE kit

When children come to school in their PE kit on their timetabled day—these days should now be on your child's Class Page on the website as well as your child's teacher informing you last week. This is now required to be:-

- Plain white Polo shirt not T-shirt (with school cardigan or jumper over it) - not a tracksuit top please
- Plain black tracksuit bottoms or plain black leggings
- Trainers
- Plain black shorts (can be worn or kept in a PE bag in school to change in to for indoor PE) - not cycle shorts please
- Black plimsolls (kept in a PE bag in school to change in to for indoor PE)

Also a reminder that NO EARRINGS are permitted in school.

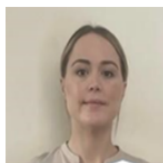
Who are Bolton Mental Health Support Team (MHST)?

We are a team working in schools across Bolton to help children and young people with emerging mental health difficulties.

Our goals are:



- 1) To deliver 1:1 and group interventions to children, young people, and parents.
- 2) To work with teachers to develop whole-school approaches to improve everyone's mental health.
- 3) To give advice to school staff to help children get the right support.



Holly and Lauren from the Bolton MHST will be joining us for a Coffee Morning on 8th November to answer any questions you may have about your child's mental health. A letter was emailed to all parents with more detail.

If parents have any concerns regarding the emotional well-being of their children, please contact school via pastoral@standrewsoh.bolton.sch.uk

Music lessons—If your child would like to learn to play a musical instrument in school please visit www.boltonmusicservice.com/parents-and-pupils or tel 01204 333533



Please access our website at www.standrewsbolton.co.uk or visit our Facebook page. Look for St Andrews OH Primary School



Road Safety

As all children return to school, we would like to repeat our **REGULAR** plea to parents and carers regarding parking and dropping off. We are already receiving complaints from Crescent Avenue residents especially with regard to **dropping off children on, or next to, the zig-zag; or from parking on the double line; or across driveway; even for the shortest of times.**

Reminder—our school gates close at 8:55am when our school day begins with pupil registration. Please use the main entrance if the gate is locked. Thank you.



The PTFA is holding its Annual General Meeting on **Tuesday 1st October** at **6:00pm** in school.

We look forward to seeing as many of you as possible. **MANY THANKS.**

DIARY DATES Autumn Term 2024

We will also endeavour to keep you up to date at www.standrewsbolton.co.uk and through our Facebook page

Thursday 26th September 2024

Friday 27th September 2024

Tuesday 1st October

Wednesday 2nd October 2024

Thursday 3rd October 2024

Monday 7th October 2024

Wednesday 9th October 2024

Thursday 10th October 2024

WB 21st October 2024

Wednesday 23rd October 2024

Friday 25th October 2024

Monday 4th November 2024

Wednesday 6th November 2024

Thursday 7th November

Friday 8th November 2024

Monday 11th November 2024

Tuesday 12th November 2024

Wednesday 13th November 2024

Monday 18th November 2024

Tuesday 26th November 2024

Wednesday 27th November 2024

Friday 29th November 2024

Weds 4th - Tues 10th December 2024

Monday 9th December 2024

Tuesday 10th December 2024

Tuesday 17th December 2024

Friday 20th December 2024

Bolton Schools Cross Country Event 3 at Moss Bank Park 4pm

Y5 trip to Smithills Hall

PTFA AGM @ 6pm

Y6 Holocaust Memorial Workshop

Bolton Schools Cross Country Event 4 at Moss Bank Park 4pm

Harvest Service at Church at 9:15am

Year 5 Electricity Workshop

Year 4 Roman Day

Multi Faith Week

Yr 3/4 Invitation Football Tournament @ Sacred Heart

School closes for the half term break at 3:30pm

School re-opens

Year 6 Parent Assembly

Year 6 trip to Bolton Museum—Amazon workshop

Open Morning for prospective parents Reception intake 2025 9:30-11am

'Flowerpot' drumming sessions for all classes

Remembrance Assembly in school

Flu Vaccinations

Year 5 Parent Assembly

Open Evening for prospective parents Reception intake 2024 3:40-6pm

Year 6 visit to Octagon Theatre—Jungle Book

Year 3 Parent Assembly

Year 4 Parent Assembly

Book Fair

Parental Consultations 4pm to 7pm

Pantomime in School—Dick Whittington

Parental Consultations—4pm to 7pm

KS1 Nativity—9:30am and 2pm

School closes for Christmas break at 1:30pm

Our latest school holiday pattern for the 2024—2025 academic year can be found in the Parent Information section of our web site. The 2025-2026 holiday pattern will be agreed by governors later this term.



St Andrew's CE Primary School

Reception Class 2025

open day

Friday 8th November
- to see our Reception Classroom
9:30am to 11am

Monday 18th November
- for a tour of our school and to meet the staff
3:45pm to 6:00pm

Please call 01204 332606
or email office@standrewsch.bolton.sch.uk to confirm your attendance please
We look forward to seeing you.

Admission to St Andrew's CE Primary School September 2025 Reception Class

You can apply for a primary school place at St Andrew's CE Primary School online anytime from 1 September 2024 to 15 January 2025 11:59pm. Please refer to the link information below.

Admission to Secondary School September 2025

Children who are in Year 6 will transfer to Secondary School in September 2025 can now go on to the Bolton Council school admissions website and make an application for a secondary school place.

To apply online please go to www.bolton.gov.uk/admissions. Guidance notes about how to apply online are available on the website.

The link to this web page can also be found via the **Our School > Admission Information** page of the school website.

Please also be aware of the updates to the Admission Policy for St James CE High School regarding church attendance from Year 4.pupils from Autumn Term 2024.

Our Harvest Service will take place at 9:15a.m. at St Andrew's Church. Traditionally, we support the Urban Outreach Winterwatch Project. We request donations to take to church on the day of the service. The third page of our newsletter suggests the most appropriate items for donation. We thank parents for their support.

Winter Watch & Storehouse Provisions List

Please note this list is only a guide and all donations are welcome. The food highlighted with * is what we need the most.

FOOD

Tinned Soups (Any)
*Tinned Minced Beef
*Tinned Corned Beef
*Tinned Stewing Steak
*Tinned Meat Stews
*Tinned Chicken Stews
*Tinned Meat Curry
*Tinned Chicken Curry
Tinned Veg Curry
*Tinned Ham
*Tinned Meat Pies
Any Tinned Fish

Tinned Carrots
*Tinned Mushy Peas
*Tinned Garden Peas
*Tinned Processed Peas
*Tinned Mixed Vegetables
Tinned Tomatoes
*Tinned Potatoes
*Instant Mash
Small Packs of Rice
Microwave Rice
Cuppa Soup

Small cooking oils (max 200ml)
Cooking Sauces
Oxo's /Gravy granules
Any Herbs & Spices
Salt & Pepper
Tomato Puree
Pickled Beetroot
Pickled Onions
Pickled Red Cabbage
Salad Cream
Tomato Sauce
Brown Sauce

Coffee
Tea
Instant Hot Chocolate
Fruit Juices (Large cartons please)
*Cordial
*UHT Long Life Milk

Tinned Sweet Pie Fillings
Tinned Sponge Puddings
*Tinned Fruit (Any)
* Instant Custard Powder
Tinned Custard/Rice Pudding
Sugar
Biscuits Plain & Chocolate
Baking Products
Flour (Plain & Self Raising)
Angel Delight
Evaporated Milk
Trifle Mixes
Jellies

Cleaning Equipment

*Large food bags
Antibacterial Spray
Dish Cloths
Air Fresheners
Bleach
Toilet cleaner

Toiletries

200ml Shampoo/Conditioner
200ml Small Shower gel
Toothpaste
Toothbrushes
*Shaving foam/Gel
*Razors
Sanitary Products
Baby Wipes
*Nappies

Thank you for considering the needs of the Winter Watch & Storehouse projects.
