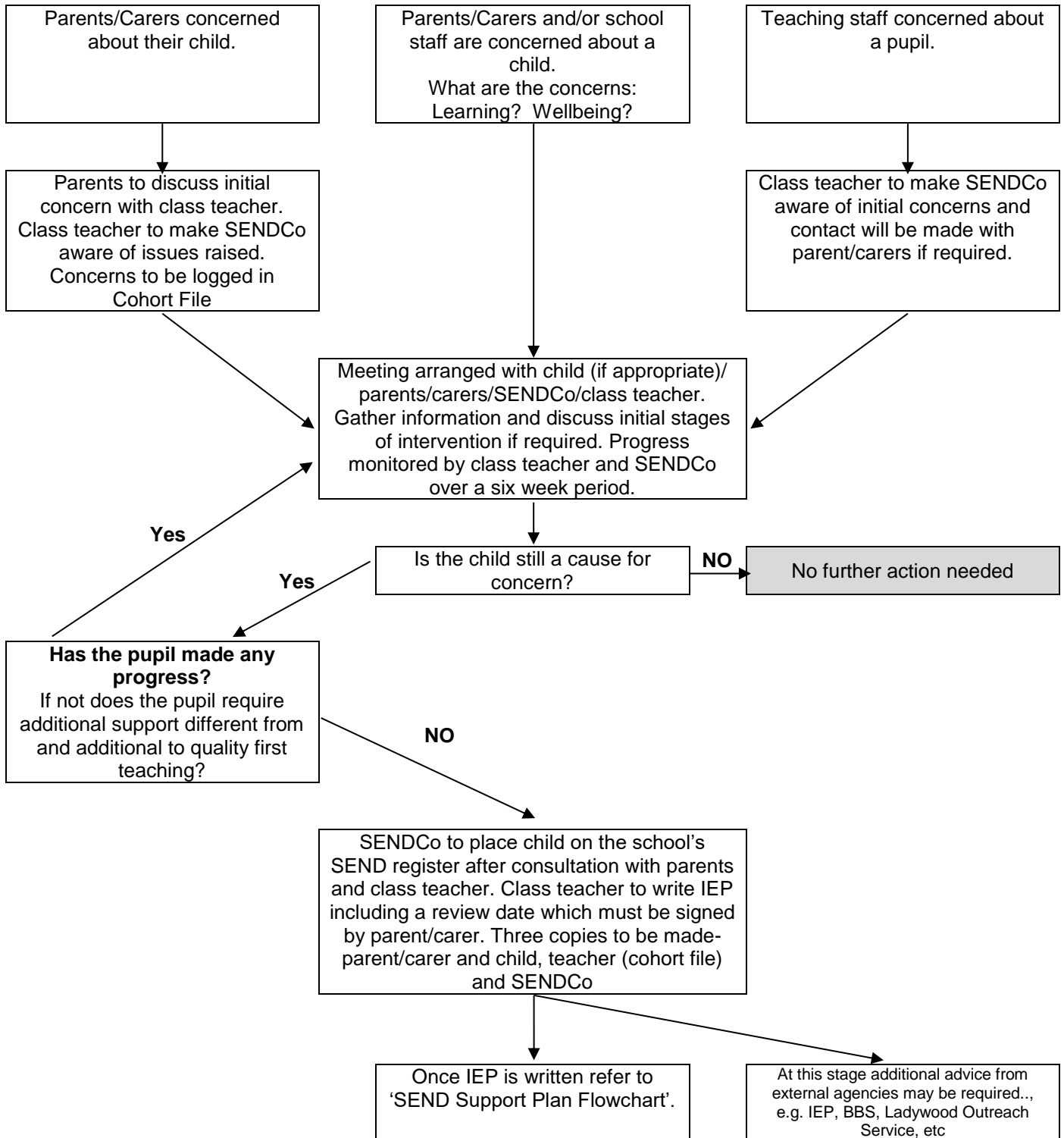




Identification of children with SEND at St. Andrew's CE Primary School



SEND Support Plans must be reviewed termly (or more often where needed) so that essential intervention can be arranged to ensure SEND pupils make progress.

Each stage will be recorded on the child's SEN SIMS record.

***Growing in faith, hope and love.
1 Corinthians 13:13***



***Growing in faith, hope and love.
1 Corinthians 13:13***